



THE CALVERTON



Plan Varies Slightly From Below



4 Bedroom / 2 Bath / Ranch
Approx. 1,898 sq. ft.
Main Level - 1,611 sq. ft.
Bonus Room - 287 sq. ft.
Basement - 1,611 sq. ft.

Features Include:
Hardwood / Ceramic Tile in
Kitchen, Dinette & Foyer, Vaulted
Ceiling in Great Room, Tray
Ceiling In Master Bed w/ Large
Walk-In Closet, Full Landscape
Package Included



At Sunshine Homes, we help design and build a home from a homeowner's perspective. We are committed to providing personal attention throughout the whole homebuilding process. Your needs and satisfaction are of the utmost importance at Sunshine Homes, an attribute our past and present homeowners have come to value.

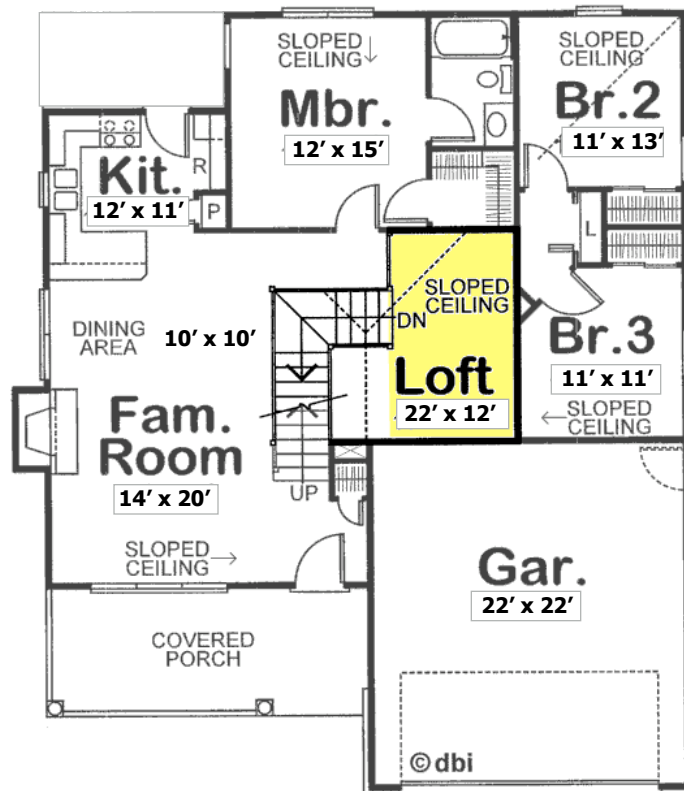
Contact us at:

219-395-8400

or visit us at:

Sunshinehomesbuilder.com

Brigadoonvalpo.com



Copyright of Sunshine Homes, Inc. - Plan Varies Slightly From Above